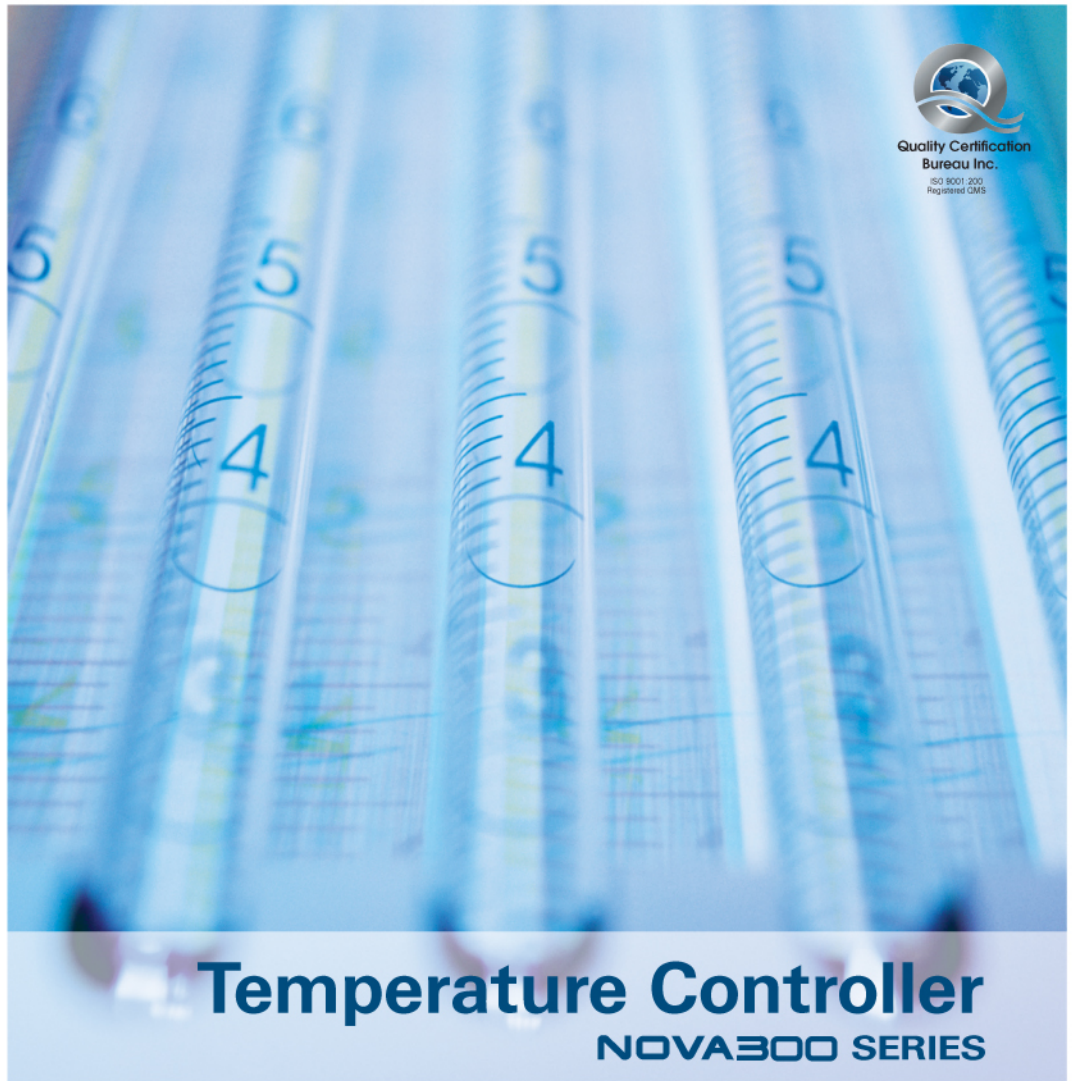


- Precision Control
- Advanced Reliability
- Reliable Price
- Various Communication Protocols
- High Resolution





Your Best Partner!

- ▶ A/D 18 Bits High Resolution - A/D 18 Bits
- ▶ Various Communication Protocols
 - PC Link, MODBUS, SYNC Master, Slave
- ▶ PID Control with Reduced Overshoot
- ▶ Multi Input - T/C, RTD, DCV
- ▶ Controlling and monitoring Controller with PC
- ▶ Advanced PID Algorithm
 - with built-in Auto-tuning Function
- ▶ Available Function to protect Over-shoot
- ▶ 2 Points Alarm Output as Standard Option
- ▶ Powerful Communication
 - and 31 Sets Multi-drop Function
- ▶ Free Operation Program



Specifications

Item	ST340/360/370/380/390	RT390	SD360 / SD390 / RD390	RS390
PV/SP Display	Each 4Digits		Each 4 Digits	
Sampling Time	250ms		250ms	
Accuracy	±0.2% of FS		±0.2% of FS	
Control Loops and Mode	Single-Loop Control		-	
Running Mode	Auto / Manual		-	
Number of SetPoint	1 SP (1 Zone PID)		-	
Input	Type	Universal Input (1 Point)	Universal Input (1 Point)	
	Sensor	T/C	K, J, E, T, R, B, S, L, N, U, W, Platinel II	K, J, E, T, R, B, S, L, N, U, W, Platinel II
		RTD	Pt100, JPt100	Pt100, JPt100
	DCV	-10 ~ 20mV, 0 ~ 100mV, 0.4 ~ 2.0VDC, 1 ~ 5VDC, 0 ~ 10VDC (4 ~ 20mA, 0 ~ 20mA, External Resistance 250 Ω, 500 Ω)	-10 ~ 20mV, 0 ~ 100mV, 0.4 ~ 2.0VDC, 1 ~ 5VDC, 0 ~ 10VDC (4 ~ 20mA, 0 ~ 20mA, External Resistance 250 Ω, 500 Ω)	
Control Output	Type	1 Point	-	-
	Kind	Relay, SSR(V-Pulse), SCR(4~20mADC)	-	-
Alarm	Capacity	STD 2 Points / Max 4 Points *note1	1 Point	STD 2 Points / Max 4 Points *note3
	Types	21 Types - High/Low Temp Limit, Deviation Limit...*note2		8 Types - High/Low Temp Limit Deviation Limit...
Retransmission Output Type	Type	1 Point	-	2 Points
	Kind	4 ~ 20mA(PV, SP, MV) or Loop Power Supply	-	4 ~ 20mA(PV, SP, MV) or Loop Power Supply
Communication Protocols	PC-Link, MODBUS(ASCII, RTU), SYNC Master, Slave		PC-Link, MODBUS(ASCII, RTU)	
Power Supply and Consumption	100 ~ 240VAC, 50 ~ 60Hz / Max. 6W below		100 ~ 240VAC, 50 ~ 60Hz / Max. 6W below	
Model	Suffix Code	Description		
ST340/360/370/380/390 SD360/390 RT/RD/RS390	- □□□	Digital Controller	Digital Indicator	Digital Signal Converter
Type	S	SSR	-	-
	A	SCR(4~20mA)	-	-
	R	RELAY	-	-
	0	-	Standard	-
1st Control	A	-	-	4~20mA(STD)
	B	-	-	0~20mA
	1	-	-	0~100mV
	2	-	-	0~10V
	3	-	-	0~5V
2nd Control	A	-	-	1~5V
	B	-	-	4~20mA
	1	-	-	0~20mA
	2	-	-	0~100mV
	3	-	-	0~10V
Power	0	100~240VAC	100~240VAC	100~240VAC
	1	24VDC	24VDC	24VDC
Options	/RET	Retransmission Output *note4	-	Retransmission Output *note4
	/RS	RS422/485 *note4	RS422/485	RS422/485 *note4
	/HBA	Heater Breaking Alarm *note4	Heater Breaking Alarm	-
	/ALM3	Relay Output 1 Point *note5	-	Relay Output 1 Point *note5
	/ALM4	Relay Output 1 Point *note4,*note5	-	Relay Output 1 Point *note4,*note5

*note1 : ST340,360,380 - Max 2 Points

*note2 : In case of HBA Option - 22 Types

*note3 : SD360 - Max 2 Points, RD390 - 1 Point

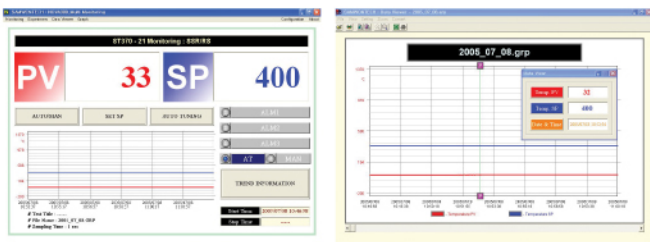
*note4 : RET, RS, HBA, ALM4 to be purchased separately(RS/HBA Available use)

*note5 : It can not use at ST340,360,380, SD360, RD390

*RD390 : Available Additional Option Only RS

Special Features

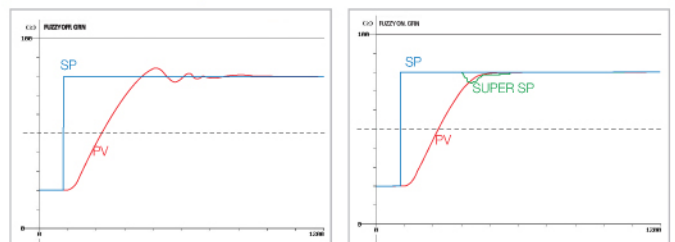
Free Application Program



▲ Application Program Main Screen ▲ Application Program Graph Screen

User can control and monitor NOVA300 with free operation program on PC, it is improved convenience and economy.

Powerful Fuzzy Function



▲ General Control ▲ General Control

It is a effective control function about overshoot in case of serious load alternation or frequent changing SP system.

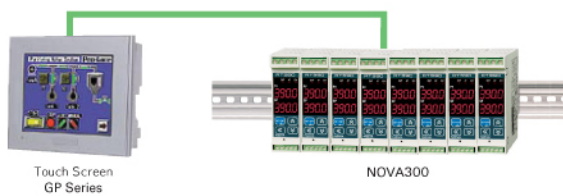
Powerful Communication Function



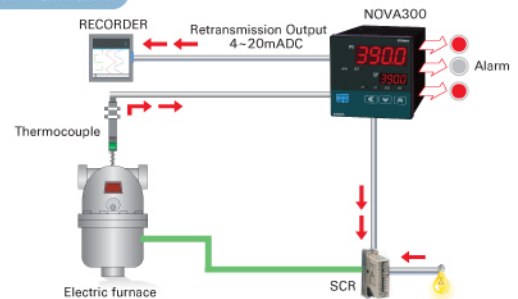
PROTOCOL - PC LINK.
 MODBUS(ASCII, RTU), SYNC Master, Slave
 Max 1.2Km with RS485, Max 31 Sets Multi-drop

Example

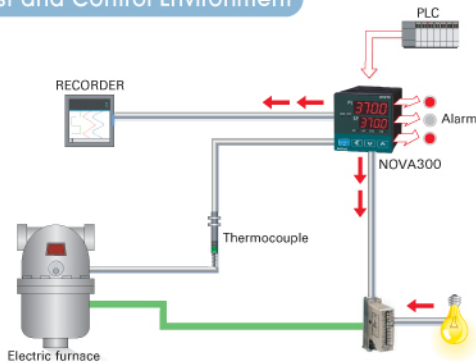
1. Din Rail Type



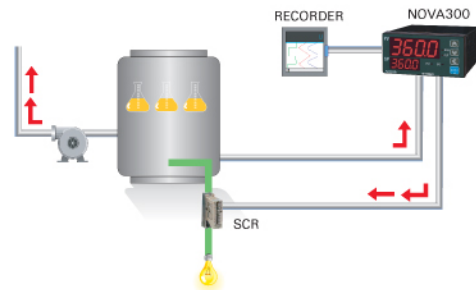
2. Electric Furnace



3. Test and Control Environment



4. Sterilization Temperature Control



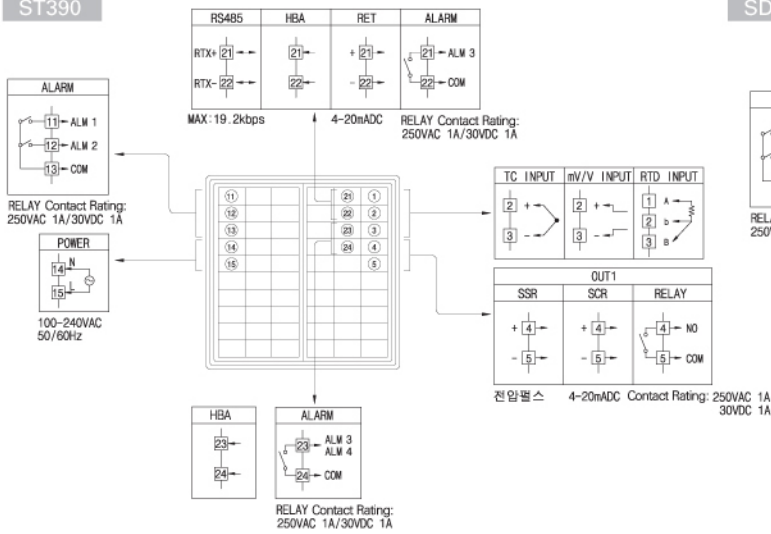
5. Soldering Machine Control



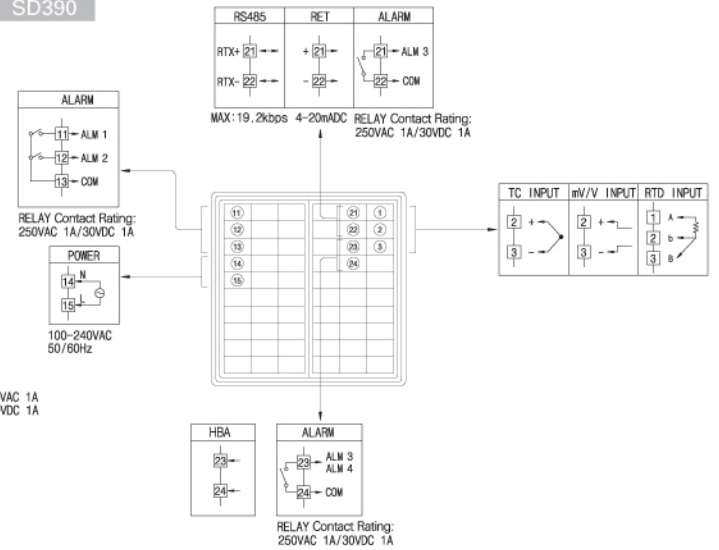


Terminal Arrangement and Extension Wiring

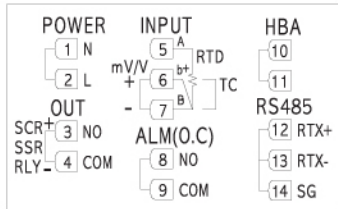
ST390



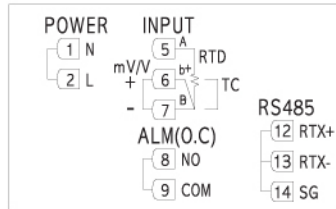
SD390



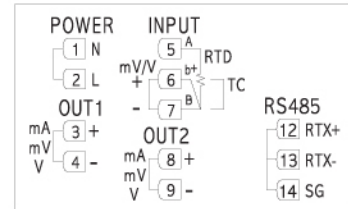
RT390



RD390

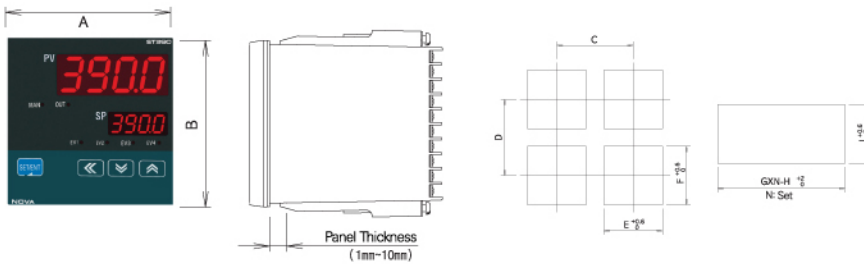


RS390



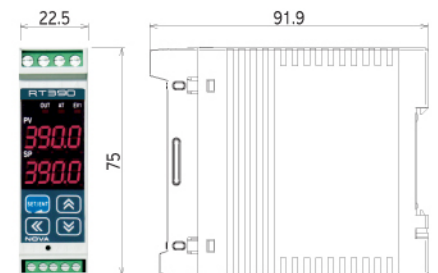
SIZE Dimension and Panel cutout SIZE

ST/SD Series



MODEL	A	B	C	D	E	F	G	H	I
ST390	96	96	120	120	92	92	96	4	92
ST380	48	96	70	120	45	92	48	3	92
ST370	72	72	90	90	68	68	71	3	68
ST360	96	48	120	70	92	45	-	-	-
ST340	48	48	70	70	45	45	48	3	45
SD390	96	96	120	120	92	92	96	4	92
SD360	96	48	120	70	92	45	-	-	-

RT/RD/RS 390



CAUTION Before using this product, read the appended user's manual carefully to ensure proper and safe operation.



SAMWON TECHNOLOGY CO.,LTD.

420-733 Bucheon Techno-park 202-703, #192, Yakdae-Dong, Wonmi-Ku, Bucheon-City, Gyunggi-Do, Korea

TEL: 82-32-326-9120 FAX: 82-32-326-9119 E-mail: webmaster@samwontech.com Homepage: http://www.samwontech.com